



FASTER FOUNDATIONS FOR EXTENSIONS

Advantages of Fast Installation of Helical Piles in Housing Developments



1. Reduced Project Timelines

Helical piles can be installed quickly, significantly reducing project timelines, allowing developers to meet tight deadlines and progress to construction faster.

2. Minimized Preliminaries Costs

Fast installation results in fewer temporary site facilities, shorter equipment hire periods, and reduced labour costs associated with long-term site setup, leading to significant savings.

3. No Curing Time Required

Unlike traditional concrete foundations, helical piles do not require curing time. This eliminates delays and allows for immediate loading, reducing the need for extended site management and associated costs.

4. Reduced Weather-Related Delays

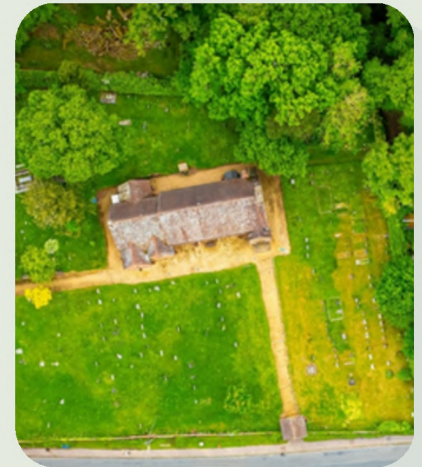
Helical piles can be installed in a variety of weather conditions, reducing downtime and the costs associated with delays caused by adverse weather conditions.

5. Less Site Disruption

The non-invasive installation method reduces the need for heavy machinery and extensive excavation, limiting disruption to surrounding areas and lowering costs associated with site preparation.

6. Fewer Environmental Impact Mitigation Measures

The low-impact nature of helical piles requires minimal ground disturbance and generates significantly less noise compared to traditional foundation methods. This can reduce costs related to environmental mitigation, noise control measures and compliance, cutting down on preliminaries for environmental site preparations.



7. Simplified Logistics

With helical piles, there's no need for large concrete deliveries or extensive soil removal, which simplifies site logistics and cuts transportation costs, reducing the need for complex preliminary planning.

8. Lower Health & Safety Costs

The safer, more efficient installation process results in fewer health and safety risks, reducing insurance premiums and the need for extensive safety measures, contributing to lower preliminary expenses.

9. Faster Site Handovers

The speed of helical pile installation allows for quicker handovers between construction phases, streamlining the workflow and reducing time spent on preliminary site occupation and maintenance.

Offsite Bases Limited